



Connect

2 August 2022

Table of Contents

Introduction	3
Install.....	3
Download the Guest.....	6
Install the Guest.....	8
Download the Host.....	10
Install the Host.....	13
Guest.....	16
Load and Unload the Guest.....	16
Impero Guest functionality	16
Host.....	17
Start and stop the Impero Host Daemon.....	17
Display and hide the Impero Host window.....	18
Host Functionality	19
Uninstall	20
Uninstall the Guest.....	20
Uninstall the Host	21

Introduction

The following guide is intended to guide the user in how to install, uninstall, load and unload **Connect** on Linux.

Connect for Linux includes the **Guest** and **Host**.

The **Guest** can connect to a remote **Host** through the following communication protocols:

- Impero Portal
- Internet (TCP)
- LAN (TCP)
- WebConnect and WebConnect3

The **Host** uses the following communication protocols to connect to the **Guest**:

- Impero Portal
- Internet (TCP)
- LAN (TCP)
- UDP
- HTTP
- WebConnect and WebConnect3

Install

Before you install the **Host** and **Guest**, make sure that your computer meets the following minimum technical requirements:

Supported platforms: 32 & 64-bit

- Red Hat Enterprise Linux 7
- Ubuntu 16.04, 18.04, 20.04
- SUSE 12

NOTE: Supported X Window System is X.org

Memory:

- For the **Guest** a minimum of 1 GB (2 GB recommended)
- For the **Host** a minimum of 512 MB (1 GB recommended)

Disk space:

- For the **Guest** a minimum of 410 MB
- For the **Host** a minimum of 45 MB

Video: any supported by X.org Server

NOTE: To be able to install the **Host** or **Guest**, make sure that the user logged on the computer has system user privileges.

To download the **Connect** for the supported Linux distributions refer to the following [link](#).

- The download page includes separate installation or archive files for the **Guest** and **Host** depending on your Linux distribution.
- The archive file contains the following files:
 - `ca-certificates.crt`
 - `eula.txt`
 - `install.pl`
 - `installpubkey`
 - `Impero.pub`
 - `Impero-*.deb` | `Impero-*.rpm` (based on the Linux distribution in use)

`install.pl` is a Perl script file that handles the installation process via the terminal.

To list all the parameters of the `install.pl` Perl script, use the following command:

```
install.pl --help
```

`install.pl` parameters table:

Function	Command
<code>[--help]</code>	Prints the help message and exits.
<code>[--version]</code>	Prints the version info and exits.
<code>[--serial <serial>]</code>	Installs the Guest Host with the <code><serial></code> number license key.
<code>[--debug]</code>	Turns debugging on.
<code>[--license]</code>	Prints the License .
<code>[--autoinstall]</code>	Non-interactive installation assumes that you agree with the License .

Example:

For the non-interactive **Host** installations, use the following command:

```
perl install.pl --autoinstall --host <serial>
```

You can install the **Guest** and **Host** in two ways:

- A. You double-click on the `Impero-host_*.deb | rpm`, and `Impero-guest_*.deb | rpm` installation file within your desktop environment.
- B. Install them from the terminal.

NOTE: We recommend that you install the **Guest** and **Host** via the terminal.

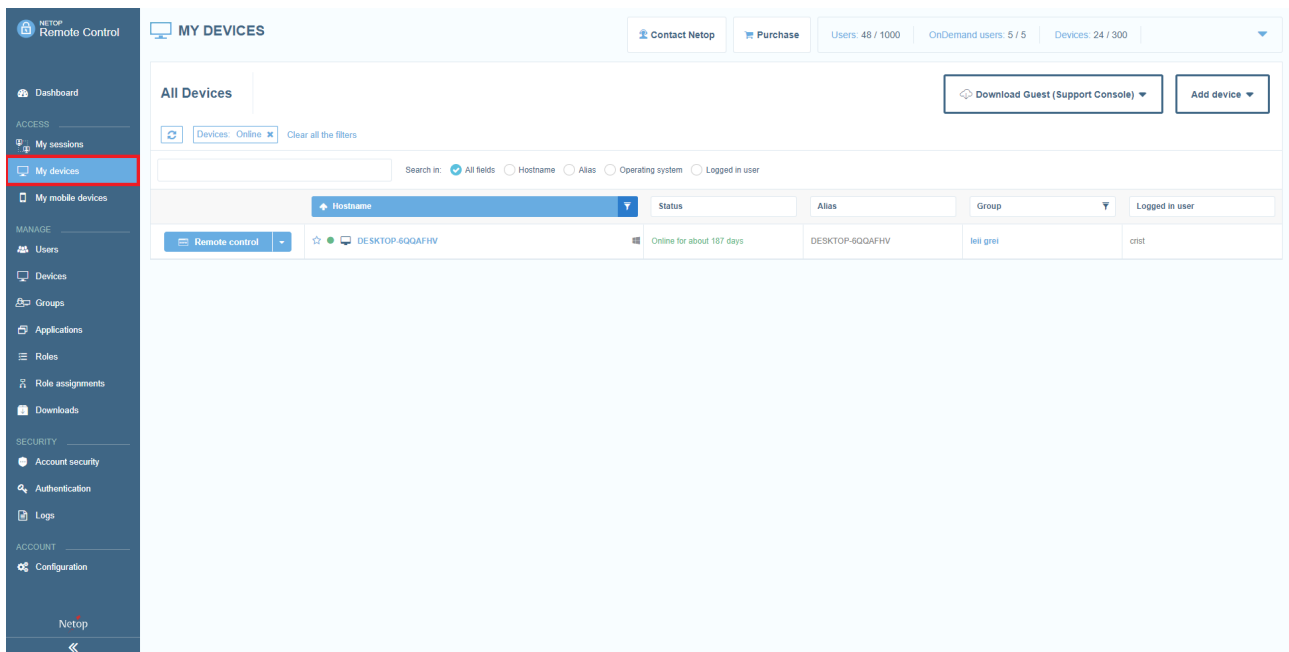
Download the Guest

You can download the **Guest** from:

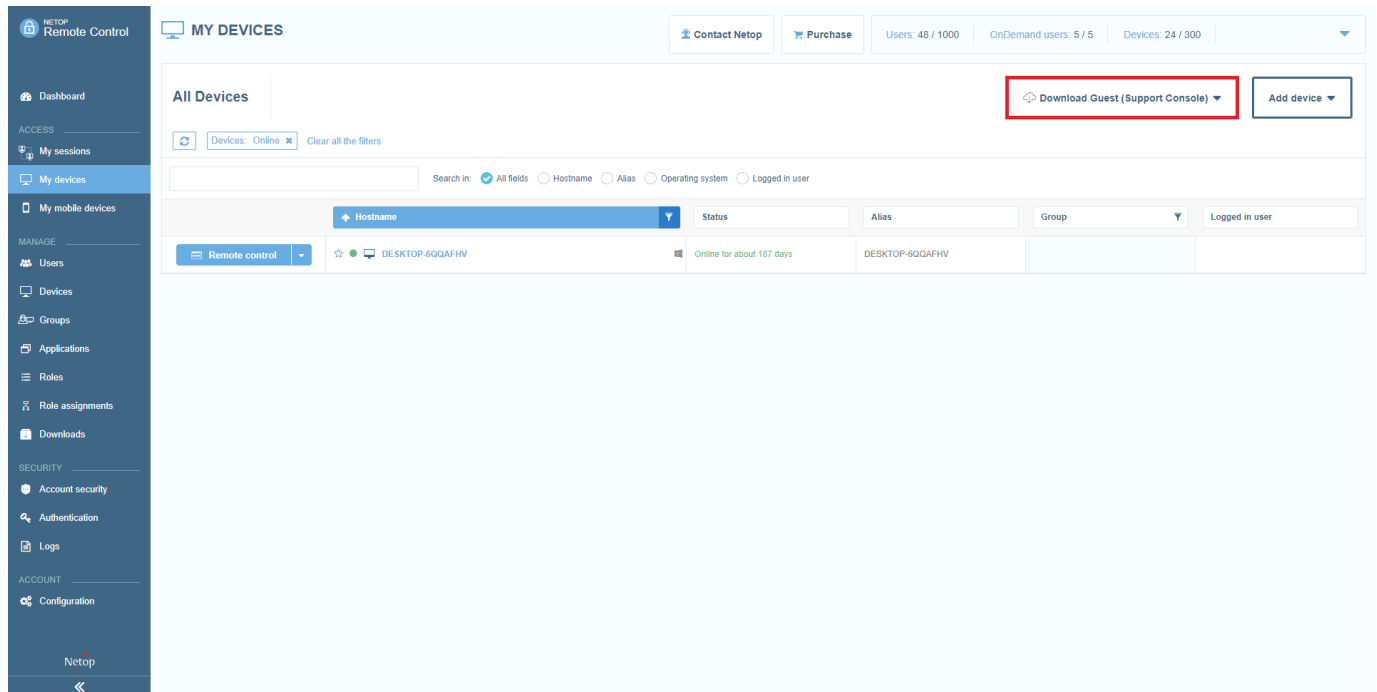
- the Portal
- the Impero website, by clicking on the following [link](#)

To download the **Guest (Support Console)** application from the **Portal**, proceed as follows:

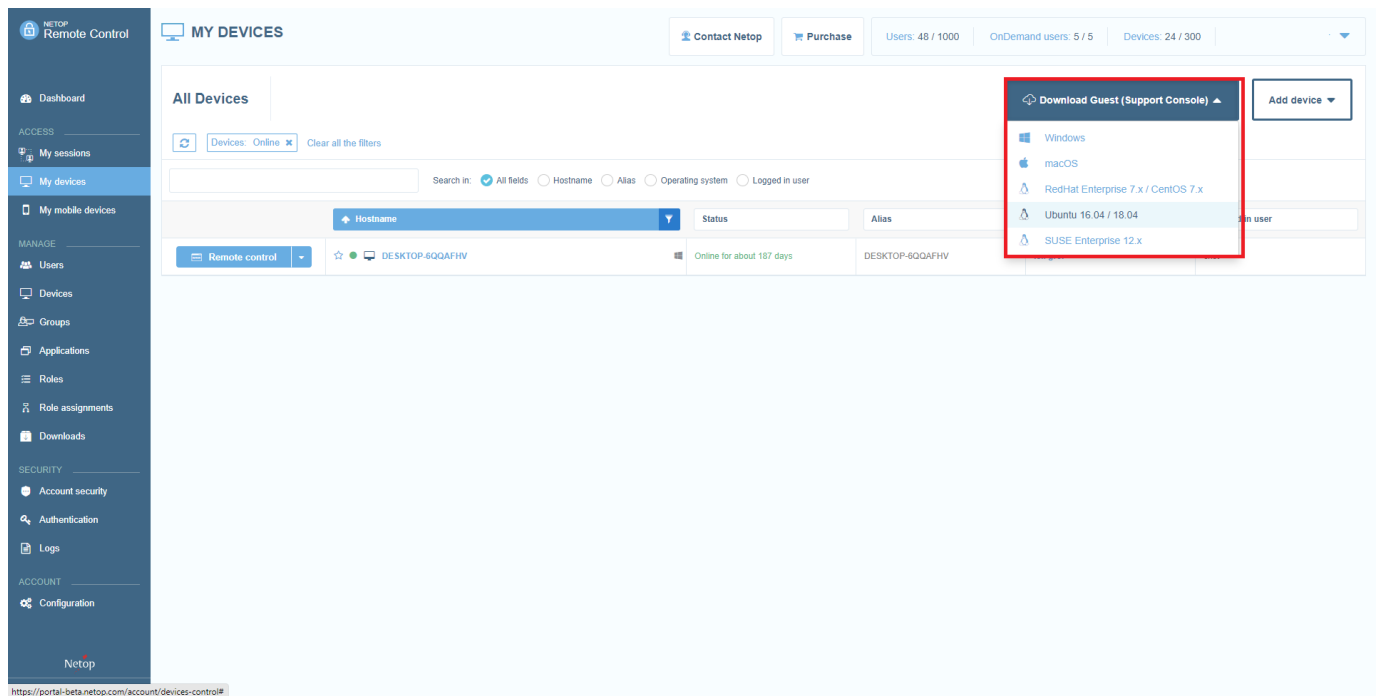
1. Log in the **Portal**.
2. Go to the **My Devices** page.



3. Click on the **Download Guest (Support Console)** button.



4. Select the desired platform from the dropdown menu.



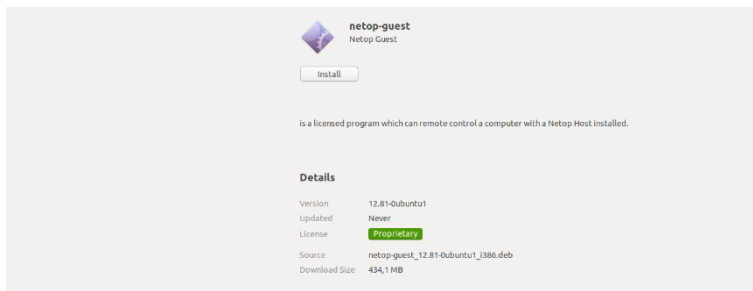
5. Save the archive.

Install the Guest

A. Install the **Guest** through the Software Install*

To install the **Guest** through the application software, proceed as follows:

1. Go to the file path of the extracted **Guest**.
2. Double click on the **Impero-guest_*.deb | rpm** installation file. The following window is displayed.



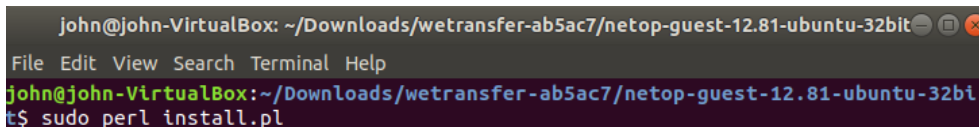
3. To install the **Guest**, click on the **Install** button.
4. Specify your password for authentication.

B. Install the **Guest** via the terminal*

To install the **Guest** via the terminal, proceed as follows:

1. Go to the file path of the extracted **Guest**.
2. Open up a terminal window.
3. Use the following Perl script to initiate the installation process:

```
sudo perl install.pl
```



Specify the password for authentication.

* The procedure applies to Ubuntu version 18.04.1 distribution of Linux.

4. As part of the installation process, it is necessary that you accept the **End User License Agreement**.

```

John@John-VirtualBox: ~/Downloads/wetransfer-ab5ac7/netop-guest-12.81-ubuntu-32bit
File Edit View Search Terminal Help
nd use anonymous technical data and related information, including but not limit
ed to technical information about Your devic
e, system and application software, and peripherals, that is gathered periodical
ly to facilitate the provision of software updates, product support and other se
rvices to You (if any) related to the Licens
ed Software. Netop Business Solutions may use this information, as long as it is
in a form that does not personally identify You, to improve its products or to
provide services or technologies to You.

10. Contact Information. Should you have any questions, complaints or claims wit
h respect to the Agreement, please contact us at Netop Business Solutions A/S, B
regnerodvej 127, DK-3460 Birkerod, Denmark o
r +45 4590 25 25 or info@netop.com.

11. Vendor signing. For the Android version of Netop Mobile and Embedded it is e
xplicitly prohibited for end-users or any other to vendor sign or cause vendor s
igning of this module and thereby enabling t
his module to reach necessary system resources needed for the viewing of the scr
een and injection of input to the devices, that it otherwise could not reach. Do
ing so immediately revokes the license to us
e this module.

Do you accept this license ? [yes/No/quit] >yes
    
```

5. Specify the type of license you want to use for the **Guest**. The following options are available:

- **Portal** – all communication happens using the **Portal** (a **Portal** account is required)
- **Trial** – a 15-day fully-featured trial
- **Custom** – specify the required license after buying the product

```

Activities Terminal Lu 10:30
root@John-VirtualBox: ~/Downloads/wetransfer-ab5ac7/netop-guest-12.81-ubuntu-32bit
File Edit View Search Terminal Help
9. Consent to Use of Data. You agree that Netop Business Solutions may collect
and use anonymous technical data and related information, including but not lim
ited to technical information about Your device, system and application softwar
e, and peripherals, that is gathered periodically to facilitate the provision o
f software updates, product support and other services to You (if any) related
to the Licensed Software. Netop Business Solutions may use this information, as
long as it is in a form that does not personally identify You, to improve its
products or to provide services or technologies to You.

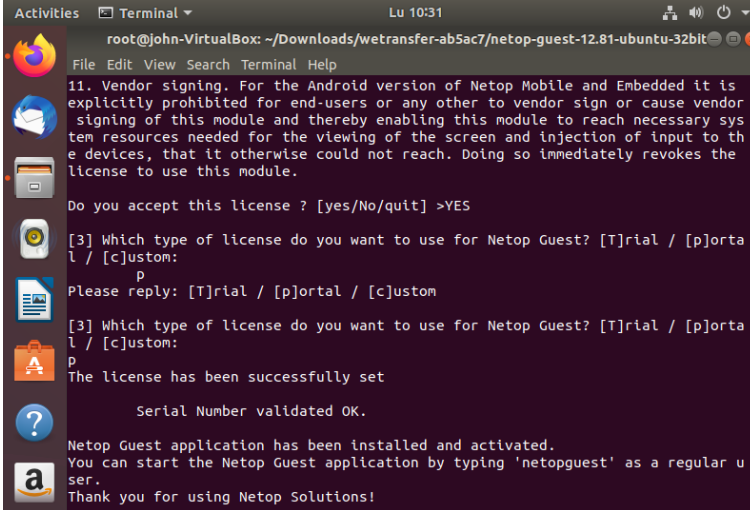
10. Contact Information. Should you have any questions, complaints or claims wi
th respect to the Agreement, please contact us at Netop Business Solutions A/S,
Bregnerodvej 127, DK-3460 Birkerod, Denmark or +45 4590 25 25 or info@netop.co
m.

11. Vendor signing. For the Android version of Netop Mobile and Embedded it is
explicitly prohibited for end-users or any other to vendor sign or cause vendor
signing of this module and thereby enabling this module to reach necessary sys
tem resources needed for the viewing of the screen and injection of input to th
e devices, that it otherwise could not reach. Doing so immediately revokes the
license to use this module.

Do you accept this license ? [yes/No/quit] >YES

[3] Which type of license do you want to use for Netop Guest? [T]rial / [p]orta
l / [c]ustom:
    
```

Guest installed successfully.



```
root@john-VirtualBox: ~/Downloads/wetransfer-ab5ac7/netop-guest-12.81-ubuntu-32bit
File Edit View Search Terminal Help
11. Vendor signing. For the Android version of Netop Mobile and Embedded it is
explicitly prohibited for end-users or any other to vendor sign or cause vendor
signing of this module and thereby enabling this module to reach necessary sys
tem resources needed for the viewing of the screen and injection of input to th
e devices, that it otherwise could not reach. Doing so immediately revokes the
license to use this module.
Do you accept this license ? [yes/No/quit] >YES
[3] Which type of license do you want to use for Netop Guest? [T]rial / [p]orta
l / [c]ustom:
p
Please reply: [T]rial / [p]ortal / [c]ustom
[3] Which type of license do you want to use for Netop Guest? [T]rial / [p]orta
l / [c]ustom:
p
The license has been successfully set
Serial Number validated OK.
Netop Guest application has been installed and activated.
You can start the Netop Guest application by typing 'netopguest' as a regular u
ser.
Thank you for using Netop Solutions!
```

NOTE:

- You are prompted to specify a license key.
- If you do not specify a license key, **Guest** automatically installs itself in **trial** mode.

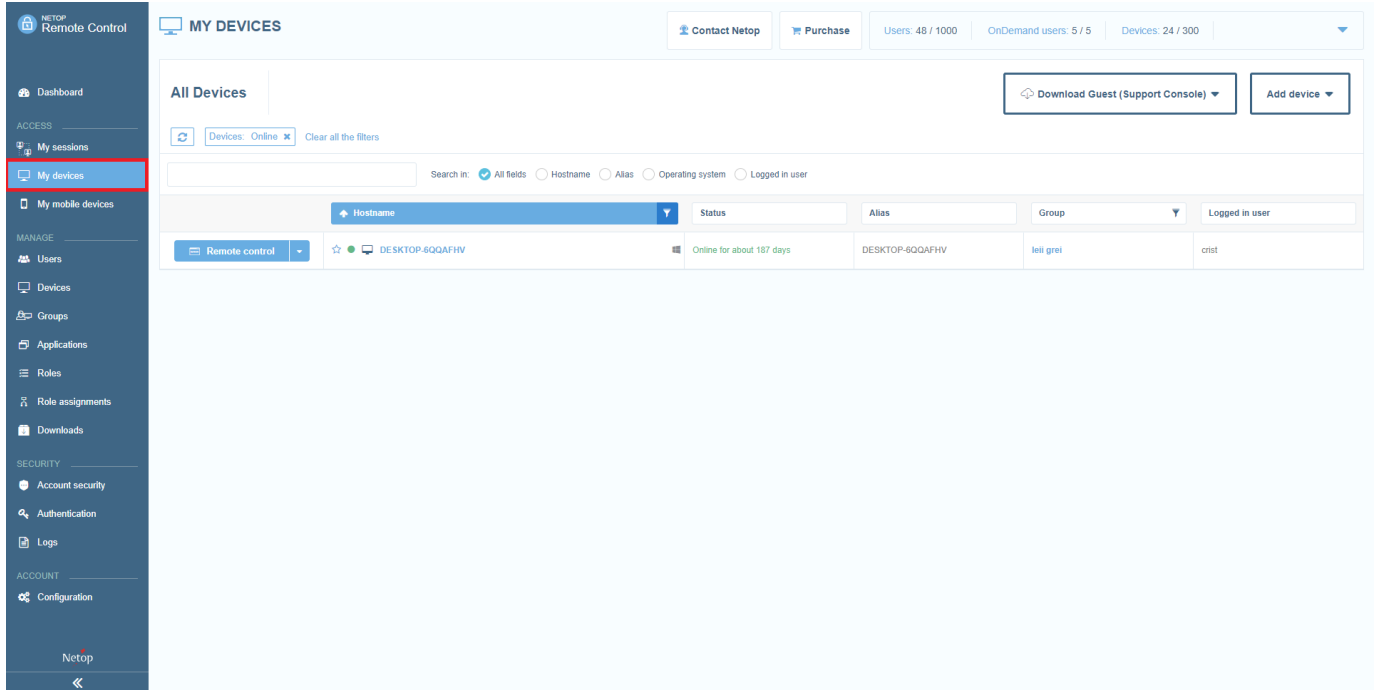
Download the Host

You can download the Guest from:

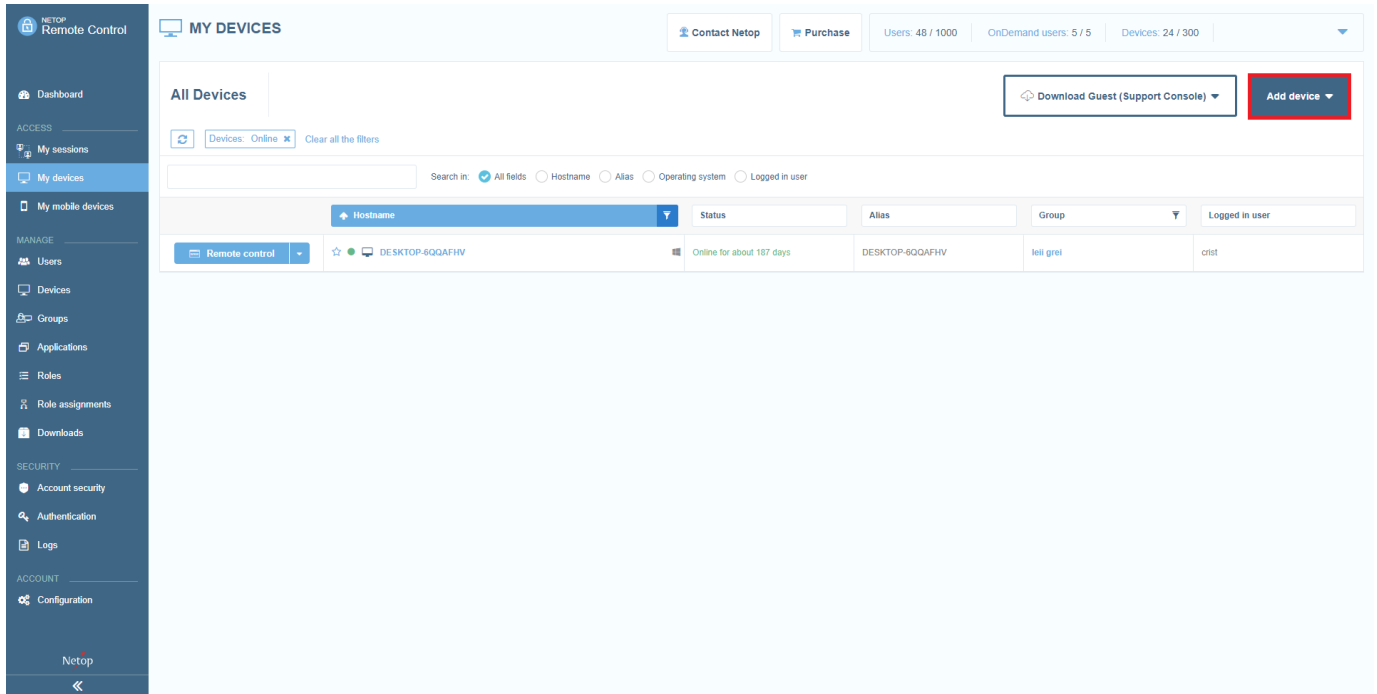
- the Portal
- the Impero website, by clicking on the following [link](#)

To download the **Host** application from the **Portal**, proceed as follows:

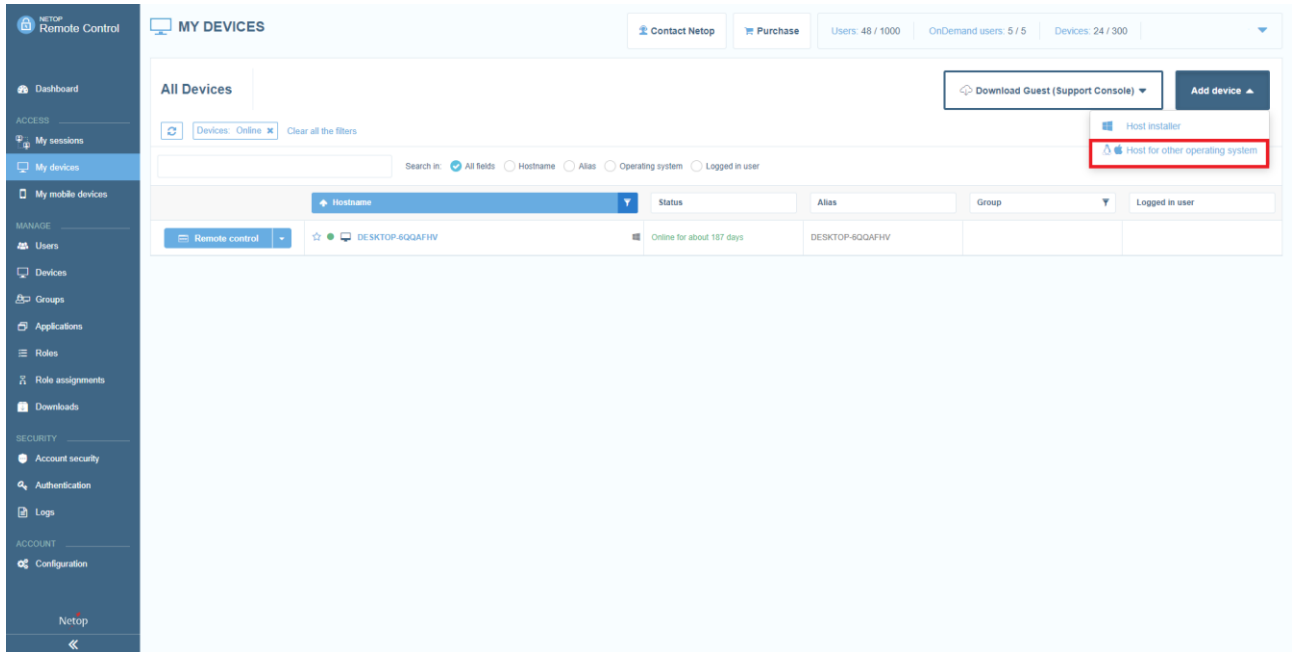
1. Log in the **Portal**.
2. Go to the **My Devices** page.



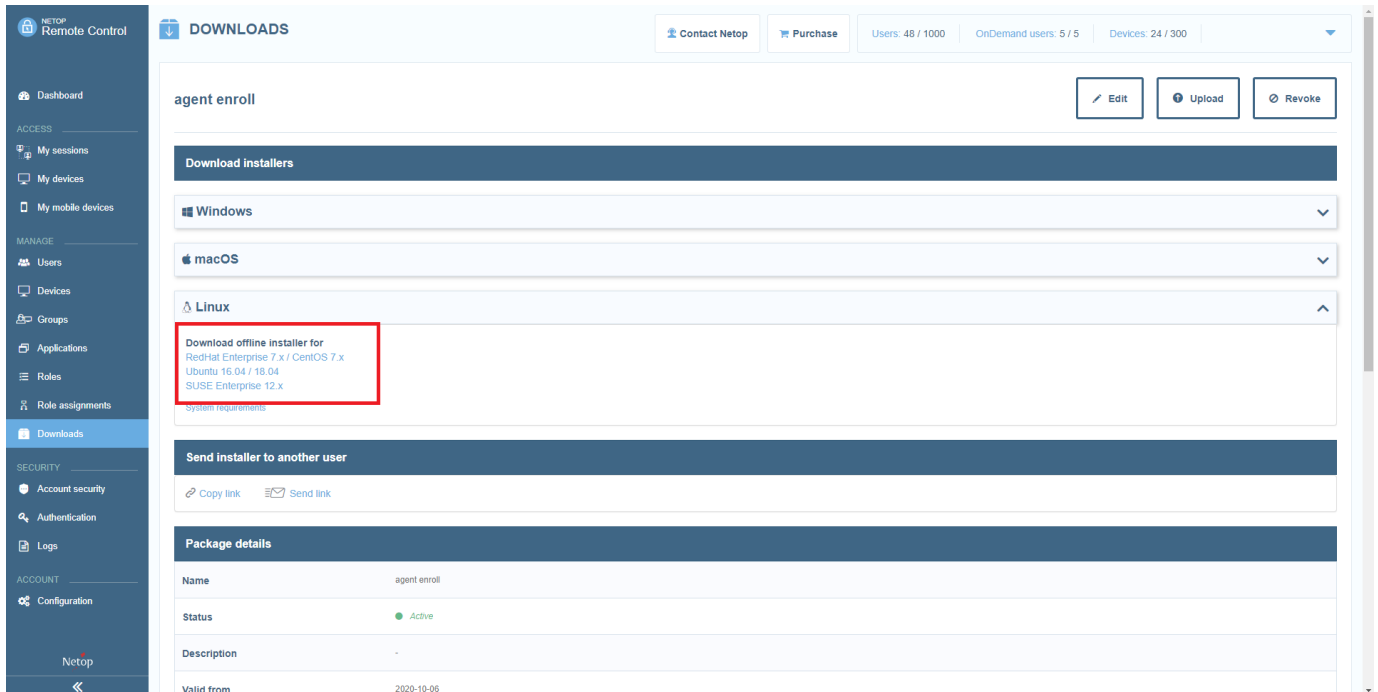
3. Click on the **Add device** button.



4. Select the **Host** for another operating system option from the dropdown menu.



5. Select the **Host** for the desired platform.



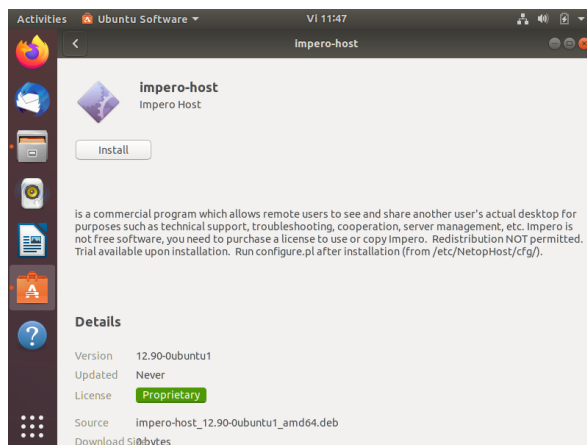
6. Save the archive.

Install the Host*

A. Install the **Host** via the Software Installer*

To install the **Host** via the Software Installer, proceed as follows:

1. Go to the file path of the extracted **Host**.
2. Double click on the **Impero-host_*.deb** | **rpm** installation file. The following window is displayed.



3. To install the **Host**, click on the **Install** button.
4. Specify the password for authentication.

B. Install the **Host** via the terminal*

To install the **Host** via the terminal, proceed as follows:

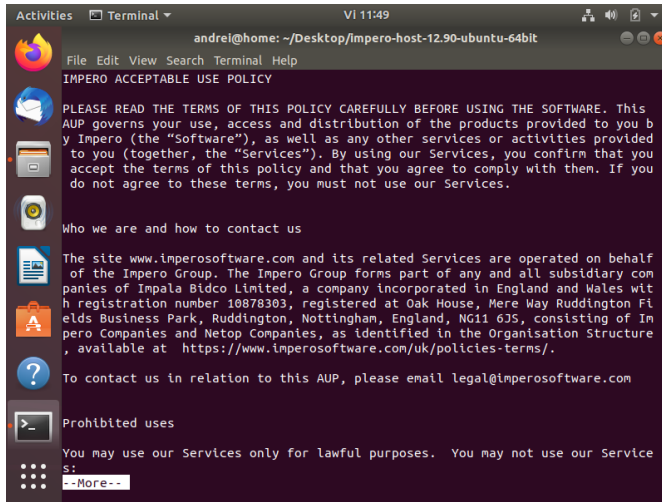
1. Go to the file path of the extracted **Host**.
2. Open up a terminal window.
3. Use the following Perl script to initiate the installation process:

```
sudo perl install.pl
```

* The procedure applies to Ubuntu version 18.04.1 distribution of Linux.

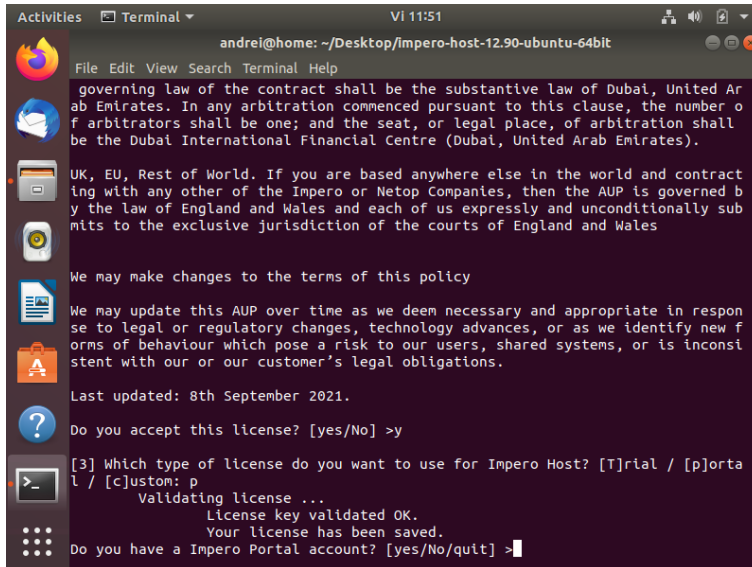
* The procedure applies to Ubuntu version 18.04.1 distribution of Linux.

4. As part of the installation process, it is necessary that you accept the **Acceptable Use Policy**.



5. Specify the type of license you want to use for the **Host**. The following options are available:

- a. **Portal** – all communication happens using the **Portal** (a **Portal** account is required)
 - i. Specify if you have a **Portal** account.



- ii. Specify the enrollment key for your **Portal** account.

```

root@john-VirtualBox: ~/Downloads/wetransfer-ab5ac7/netop-host-12.81-ubuntu-64bit
File Edit View Search Terminal Help
to the Licensed Software. Netop Business Solutions may use this information, as long as it is in a form that does not personally identify You, to improve its products or to provide services or technologies to You.
10. Contact Information. Should you have any questions, complaints or claims with respect to the Agreement, please contact us at Netop Business Solutions A/S, Bregnerodvej 127, DK-3460 Birkerød, Denmark or +45 4590 25 25 or info@netop.com.
11. Vendor signing. For the Android version of Netop Mobile and Embedded it is explicitly prohibited for end-users or any other to vendor sign or cause vendor signing of this module and thereby enabling this module to reach necessary system resources needed for the viewing of the screen and injection of input to the devices, that it otherwise could not reach. Doing so immediately revokes the license to use this module.
Do you accept this license? [yes/No/quit] >yes
[3] Which type of license do you want to use for Netop Host? [T]rial / [p]ortal / [c]ustom:
p
Validating license ...
License key validated OK.
Your license has been saved.
Do you have a Netop Portal account? [yes/No/quit] >y
Enrollment key : █
    
```

- b. **Trial** – a 15-day fully-featured trial.
- i. Specify if you have a **Portal** account.
 - ii. Specify the enrollment key for the **Portal** account.
- c. **Custom** – specify the required license after buying the product.
- i. Enter the License key for the **Host**.

NOTE:

- You are prompted to specify a license key.
- If you do not specify a license key, **Host** automatically installs itself in **Trial** mode.

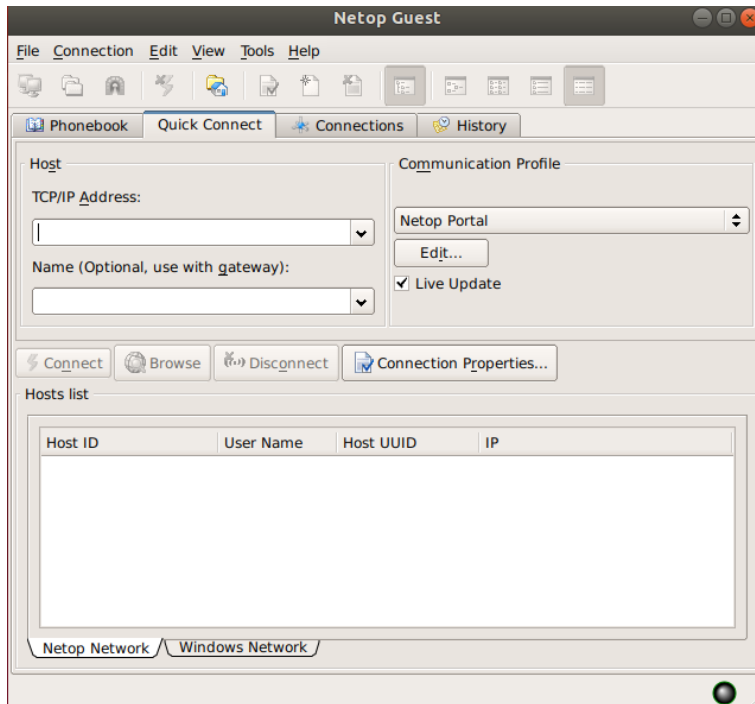
- ii. Specify if you have a **Portal** account.
- iii. Specify the enrollment key.

Guest

Load and Unload the Guest

To load the **Guest**, execute the following command in a terminal window:

Imperoguest



To unload the **Guest**, click on **Exit** from the **File** menu.

Impero Guest functionality

To connect to another port number than the **Impero** default port 6052, add the port number to the **Host** name or address after a colon, for example, 192.168.100.1:1234.

Host

Host includes the following programs:

- **Impero Host Daemon (Imperohostd)** - The **Impero Host Daemon** runs when the computer operating system starts. A user with system user privileges can start and stop the **Impero Host Daemon**.
- **Impero Host Program (Imperohost)** – The **Impero Host Program** loads and starts when the **Impero Host Daemon** loads. If started, the communication is initialized enabling a **Impero Guest** to connect. A user can typically control the **Impero Host Program** from the **Impero Host GUI**.
- **Impero Host GUI (Imperohostgui)** – The **Impero Host GUI** displays the **Impero Host** graphical user interface. It does not automatically load when the **Impero Host Program** loads. A user can load and unload the **Impero Host GUI**.

NOTE: Only a user with system privileges can make changes to the **Impero Host** program options.

Start and stop the Impero Host Daemon

The **Impero Host Daemon** starts and stops with the Linux operating system. A user with system user privileges can start, stop and report the status of the **Impero Host Daemon** with the following terminal window commands:

Command	Function	Description
<code>/etc/init.d/Imperohostd start</code>	Start	You use this command to start the Impero Host Daemon and load the Impero Host Program .
<code>/etc/init.d/Imperohostd restart</code>	Restart	You use this command to restart the Impero Host Daemon and load the Impero Host Program .

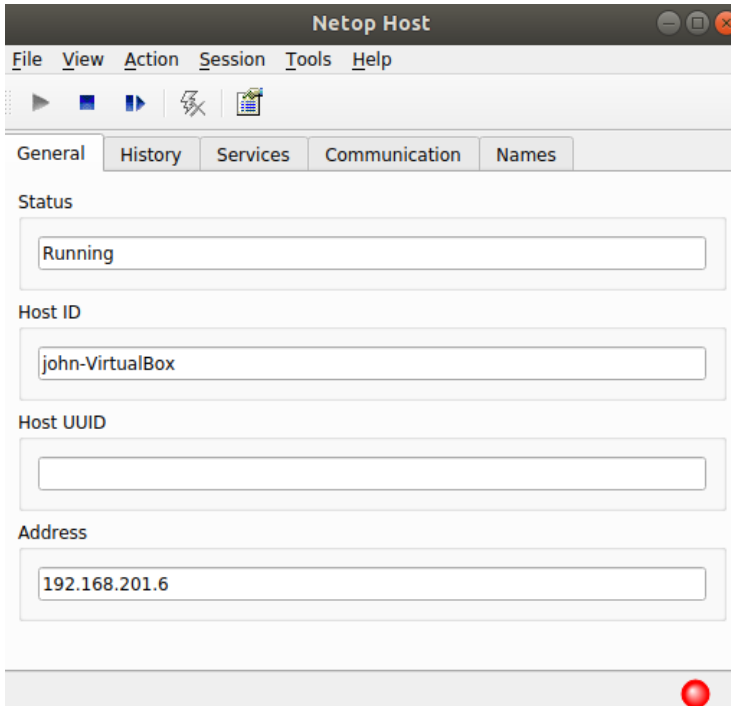
<code>/etc/init.d/Imperohostd status</code>	Status	You use this command to return a message of whether the Impero Host Daemon is running or not.
<code>/etc/init.d/Imperohostd stop</code>	Stop	You use this command to unload the Impero Host Program and stop the Impero Host Daemon .

Display and hide the Impero Host window

The **Impero Host GUI** doesn't automatically load when the **Impero Host Program** loads. If the **Impero Host Program** is loaded, execute the following command in a terminal window:

Imperohostgui

The **Impero Host** interface is displayed.



NOTE: The **Imperohostgui** command assumes that the **Impero Host GUI** program file is located in the **/usr/bin** directory or is located in a directory included in the global **PATH**. If the **Impero Host GUI** is located in another directory then specify the full directory path before the **Imperohostgui** command.

To unload the **Impero Host GUI**, click on **Exit** from the **File** menu.

Host Functionality

The **Host** window contains most of the **Host** for Windows window elements but has reduced functionality in comparison with the Windows version and the set up is organized differently.

The **Host** enables a remote **Guest** to connect by using the **TCP/IP**, **TCP/IP (TCP)**, **Serial** (modem), **HTTP**, **WebConnect**, **WebConnect3**, and the **Impero Portal** communication protocols. Once authenticated, the **Guest** can view the remote screen, control the keyboard and mouse, transfer files between the computers, and interact with the end-user.

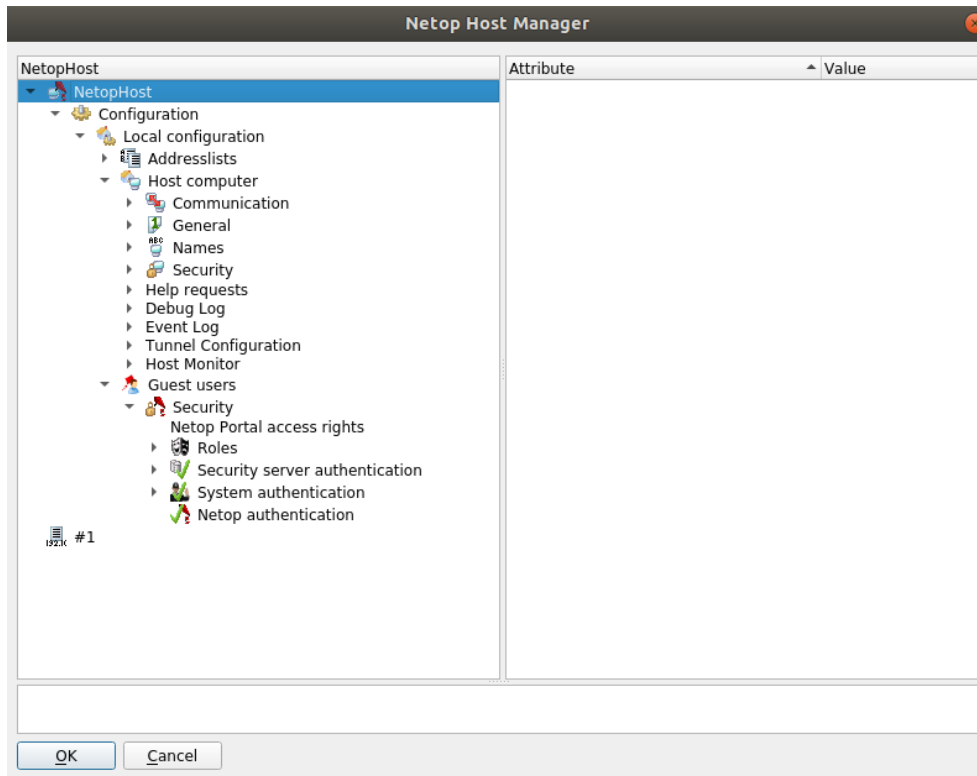
To change the setup options of the **Host**, click on **Options** on the toolbar or from the **Tools** menu. The **Impero Host Configuration** login window is displayed.



Specify a valid Linux username and the matching password.

NOTE: To change the setup options, make sure that you have the privileges to edit the `/var/opt/Impero/host/host.xml` file.

Click on **OK**. The **Impero Host Manager** is displayed.



Uninstall

Uninstall the Guest

To uninstall the **Guest**, either use the operating system's package or as root execute the following commands in a terminal window:

- For **RedHat, CentOS, SUSE**:

```
rpm -e Impero-guest
```

- For **Ubuntu**:

```
sudo apt autoremove Impero-guest
```

Uninstall the Host

To uninstall the **Host**, either use the operating system's package manager or as root execute the following commands in a terminal window:

- For **RedHat, CentOS, SUSE**:

```
rpm -e Impero-host
```

- For **Ubuntu**:

```
sudo apt autoremove Impero-host
```

Refer to the specific package manager of your distribution that you are using for more information on how to remove the installed packages.